

# Post Drought Management

Fadzayi Mashiri Ph. D

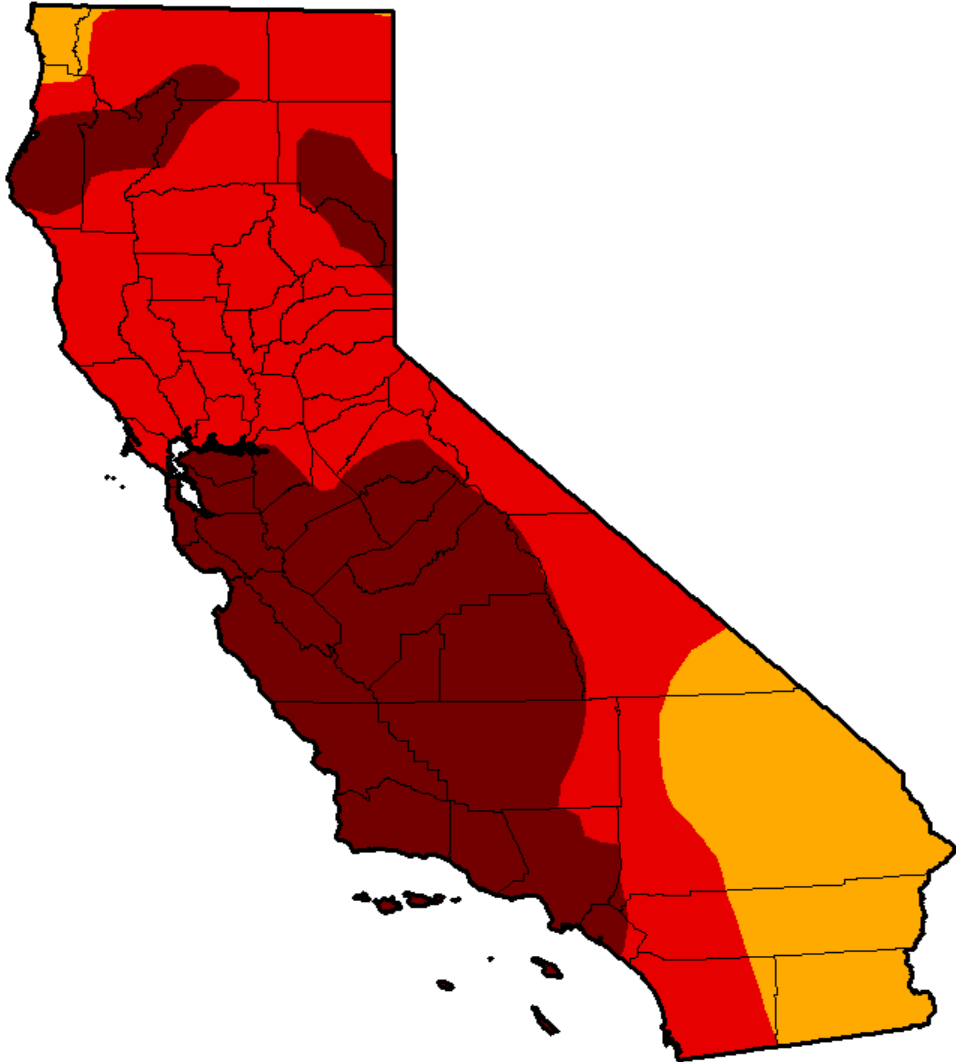
UCCE

Livestock and Natural Resources Advisor

Mariposa, Merced and Madera Counties

# Drought situation 2014

Who is most affected?



Intensity:

- D0 - Abnormally Dry
- D1 - Moderate Drought
- D2 - Severe Drought

- D3 - Extreme Drought
- D4 - Exceptional Drought

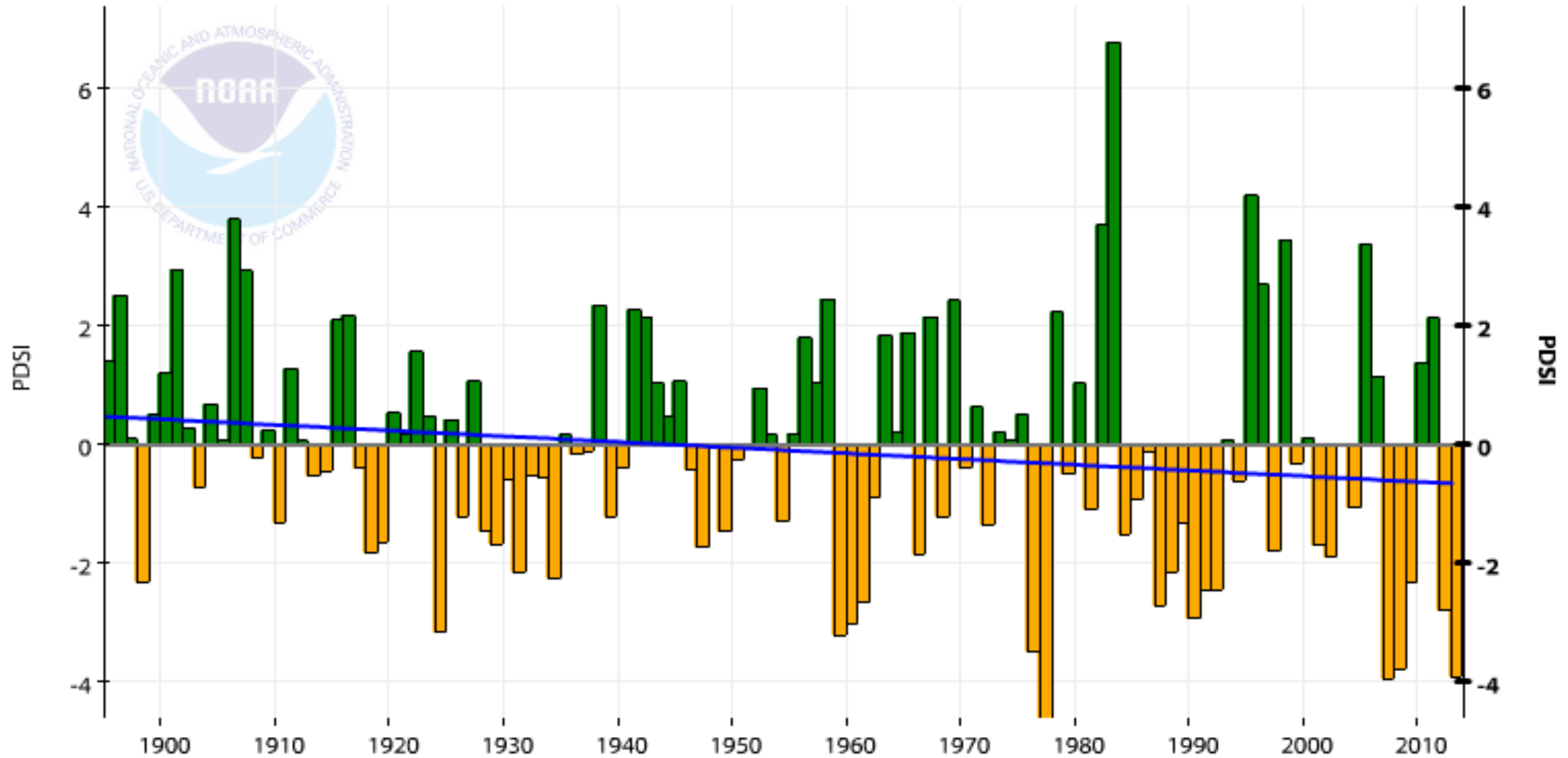
# Impacts of drought

- Reduced forage production
  - destock early
  - Buy hay
  - Increase potential for poisoning
- Lower water table – wells drying
  - Haul in water
- Increased Fire risk
- Reduced profitability

# Palmer's drought severity index trend

California, Climate Division 5, PDSI, January-December

1895-2013 Trend -0.10/Decade  
1901-2000 Avg: -0.02  
PDSI



# Adaptation to drought

- Drought is nothing new to ranchers
- Developed adaptive methods
  - Proactive
  - Reactive
- Consecutive drought increase burden and reduces ability to adapt

# Focus

- Short-term
- Medium-term
- Long-term

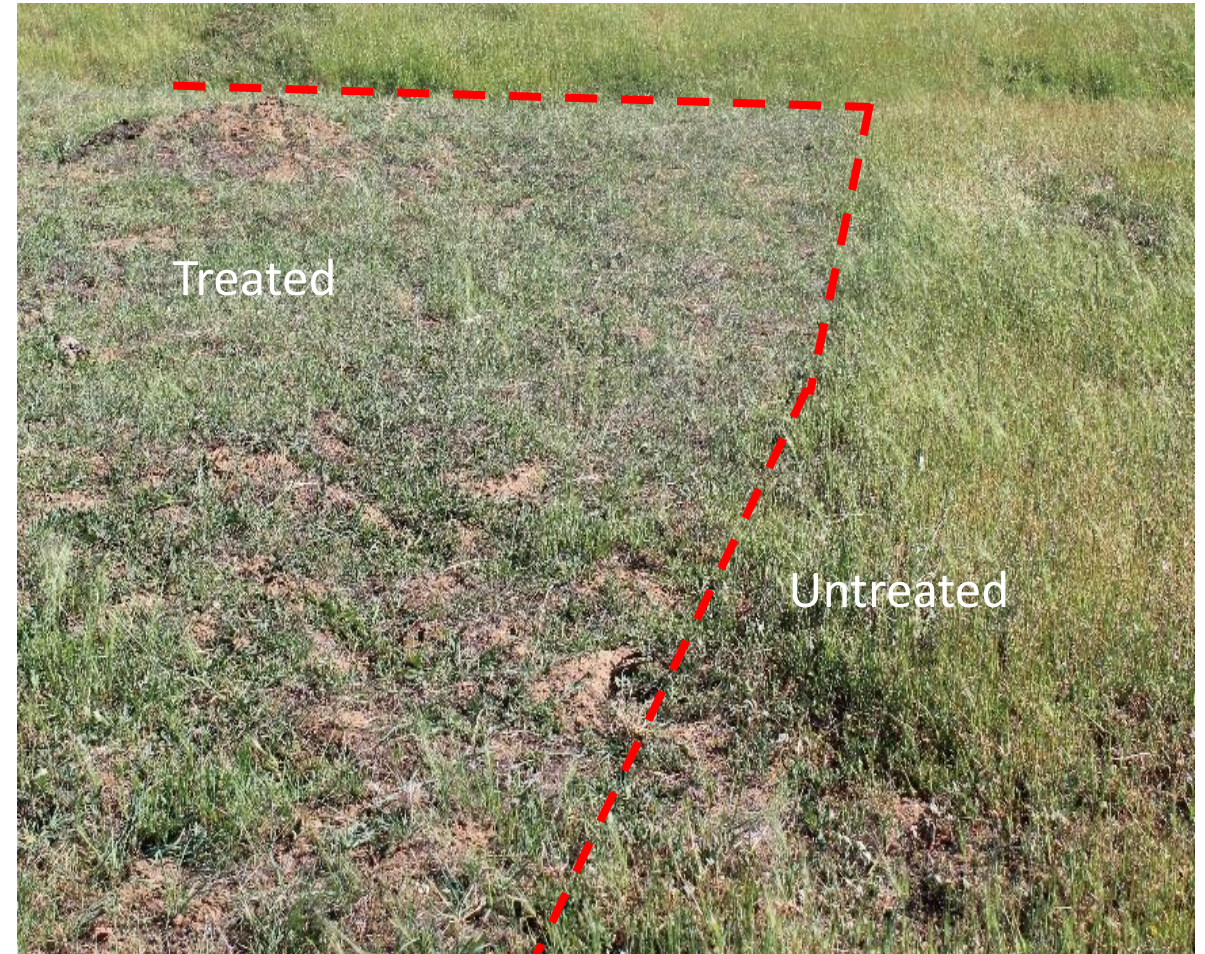
# Short-term

- Restocking
  - genetics
  - Health
- Forage availability
- FSA programs:
  - Emergency programs
  - Livestock feed programs
  - Water hauling programs
  - Emergency or operating loans



# Medium term

- Rangeland condition –
  - stocking rates,
  - carrying capacity,
  - RDM
- Weed management
- Building herd





# Long-term

- Flexibility
- Different animal types –
  - stocker and cow-calf mix
- Lease more land or irrigated pasture
- Conservative stocking rates
- Alternative on-ranch enterprises –
  - value adding, wildlife, agro-tourism
- Off- farm income
- Water availability

- Drought and taxes have a lot in common, they're both facts of life that must be dealt with periodically; they're both pains in the neck, and they both carry serious consequences if we choose to ignore them (J. Mosley)
- Sustainable systems take planning